

EVIDENCE FOR CHANGE

CDPC FINAL REPORT 2019

A SUMMARY



cdpc.sydney.edu.au



COGNITIVE
DECLINE
PARTNERSHIP
CENTRE

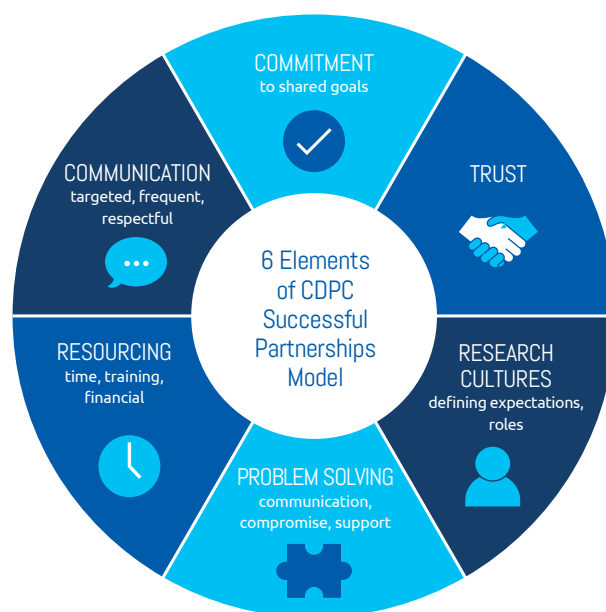


THE UNIVERSITY OF
SYDNEY

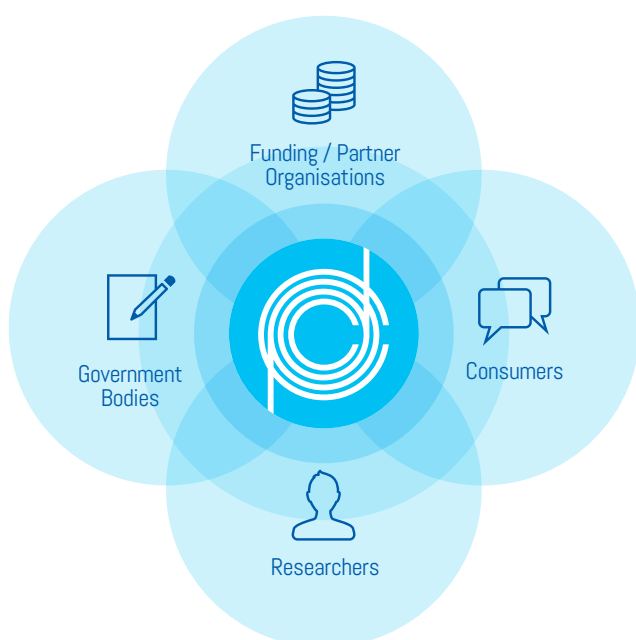
The CDPC developed, communicated, and implemented research that improves the care of people living with dementia and their families.

The NHMRC Partnerships for Better Health Initiative was set up in 2011 to produce quality research that answered complex questions faced by decision makers about issues that impact the health of Australians. At that time cognitive decline was identified by government, aged care providers (Brightwater Care Group, HammondCare, Helping Hand Aged Care) and Dementia Australia, as a major health challenge facing Australia, and a new approach was needed to tackle this important area. This research model required engaging not just academic researchers but also industry partners and end users in the development and implementation of all research to ensure translation of research into policy and practice.

6 Elements of CDPC Successful Partnerships Model



For CDPC research outcomes to have the greatest opportunity to influence systems change in the care for people with dementia required a co-design research approach.



The CDPC collaborative involvement of 'consumers' in all stages of its research, supported targeted, relevant research outcomes, to improve the care of people with dementia. Involving 'consumers' in broad dissemination of its research findings and outputs, including to the public, has supported a spread beyond academia of the Centre's research benefits and influences.

(Joan Jackman: Dementia Australia)

The role of industry partners Brightwater Care Group, HammondCare, Helping Hand Aged Care and Dementia Australia ensured that research outcomes could be implemented to benefit clients of aged care services, as well as the staff and volunteers that supply those services. The CDPC model of industry engagement with academic research teams, supported by consumer representatives, in the initial development, conduct, evaluation and implementation of research ideas has relevance for the rapidly ageing global population.

(Jan Van Emden: Helping Hand Aged Care)

CDPC project outcomes 2013–2019

Clinical Guidelines

- Australia's first clinical practice guidelines for people with dementia
- Layperson's guide on best practice dementia diagnosis, treatment and care
- Informed Vietnam's National Dementia Plan.

Care Environments and Quality of Life

- Evidence on best models of residential care from the consumer perspective
- Consumer rated quality of care instrument for people with dementia and their families
- Quality of life instrument based on people's preferences
- Hospital programs that improve outcomes of people with dementia.

Medication Management

- Tool to simplify medication procedures in aged care
- National action plan for quality use of medicines in older Australians
- Clinical practice guideline for doctors on how to trial withdrawal of Cholinesterase inhibitors and memantine
- Web-based medication review platform tailored to older Australians
- Vitamin D implementation program in residential aged care.

Attitudes to Dementia

- Awareness of how dementia influences relationships materially, physically, psychologically, and socially
- Understanding use of regulation in the aged care industry
- How children are impacted when a parent has dementia.

Planning, Decision-Making and Risk

- Supported decision-making policy guidelines for residential aged care
- Guide to support decision-making for families and people with dementia
- Advance care planning recommendations for people with dementia
- Community awareness of financial decision-making documents for older Australians
- Training of bank staff on financial decision-making tools for people with dementia.

Maintaining Function

- Exercise Physiology program to improve aged care environment for people with dementia, families and staff
- Reablement resources to increase function and independence of people with dementia
- Home occupational therapy and nurse-led support program
- Evidence on fall risk factors for older people with dementia.

Sustainable Workforce

- Evidence on staff factors that influence good quality care for people with dementia
- Interprofessional education toolkit in residential aged care
- Pain management resources for aged care staff
- Quality Improvement Collaboratives to improve translation of clinical guidelines.

Care Service Pathways

- Dementia support worker model for people with dementia and families
- Respite model to support the carer of a person with dementia
- Real-life and 'ideal state' map of dementia diagnosis and life after diagnosis
- Evidence on GP care for people with dementia.





CDPC internal evaluation

The [internal evaluation](#) project examined CDPC operations, partnerships, communications of findings, and evidence of impact achieved to the end of 2018, using qualitative and quantitative measures.

Milestones

Milestones achieved by the end of 2018 across all CDPC funded Activities:

838

TOTAL MILESTONES DUE

808

TOTAL MILESTONES ACHIEVED

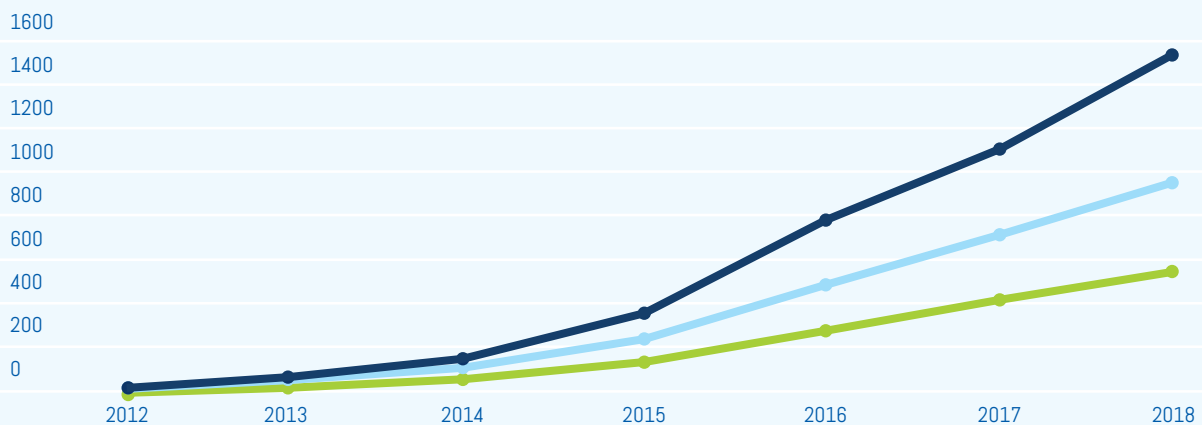
96%

TOTAL ACHIEVEMENT RATE BY END OF 2018

Total outputs (traditional and non-traditional)

The number of outputs where CDPC research findings have been delivered has increased over the life of the CDPC

- Traditional
- Non-traditional
- Cumulative total outputs



Traditional outputs (e.g. peer-reviewed)

Non-traditional outputs (e.g. publication editorials, radio interviews, technical reports)





EVIDENCE FOR CHANGE (as of July 2019)

CDPC Network

200+

RESEARCHERS
(ACADEMIC, SYSTEMS
AND CONSUMER BASED)

4

INDUSTRY
PARTNERS

32

RESEARCH
PROJECTS

1675

OUTPUTS

800+

ORGANISATIONS REPORTED AS
IMPLEMENTING CHANGE AS
A RESULT OF CDPC RESEARCH

Resources



GUIDELINES AND ASSOCIATED
CONSUMER GUIDELINES



PROJECT
REPORTS



ACADEMIC
PUBLICATIONS



ONLINE
TRAINING PACKAGES



VIDEO



WORKSHOPS



WEBINARS

Promotion

109K

SITE VISITS TO THE CDPC WEBSITE
(CDPC.SYDNEY.EDU.AU)

846

TWITTER FOLLOWERS

100+

LIKES ON FACEBOOK

50

POSTS ON
YOUTUBE

1010

E-NEWSLETTER
SUBSCRIBERS

560+

CONFERENCE
PRESENTATIONS

33

MEDIA RELEASES

569

MEDIA COVERAGE
(RADIO, ONLINE PRESS,
TV AND TRADE PRESS)

10+

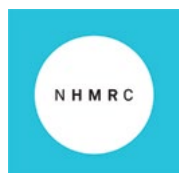
INDIVIDUAL
RESEARCHER
AWARDS, PRIZES

12

CONFERENCES AS
SPONSOR/EXHIBITOR

ACKNOWLEDGEMENTS

The NHMRC Partnership Centre for Dealing with Cognitive and Related functional Decline in Older People was funded by the NHMRC, Australian Government Department of Health, Brightwater Care Group, HammondCare, Helping Hand Aged Care, and Dementia Australia.



Australian Government
Department of Health



Brightwater



Website: cdpc.sydney.edu.au